

# Haydock Park

RACECOURSE

# UNIQUE EVENTS

AN ICONIC VENUE

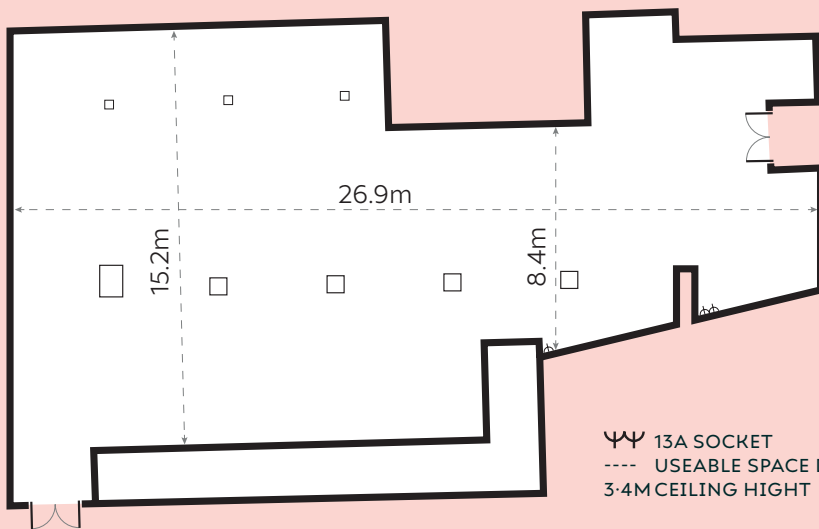


MAKERFIELD STAND:

## PARK SUITE

Located on the second floor of the Makerfield Stand and offering superb views over the racecourse, the newly refurbished Park Suite is the ideal choice for those looking for an impressive, modern space catering for up to 500 delegates.

This large room can also be split into three sections each holding approximately 150 delegates.



### Stats at a glance...

	THEATRE	500
	BOARDROOM	-
	CABARET	350
	CLASSROOM	-
	DINNER	450
	DINNER DANCE	400
	U SHAPE	-
	RECEPTION	500

CONTACT US ON: 01942 402623

NORTHWESTEVENTS@THEJOCKEYCLUB.CO.UK