

MILLENNIUM GRANDSTAND

EXHIBITION HALL 3

Located on the 1st floor, this dual aspect area is light and airy with a sweeping central staircase and views over the Parade Ring and racecourse. It adjoins Exhibition Hall 4 via the lift lobby and is ideal for refreshments for larger conferences, registration space, networking or an area for exhibitions.



THEATRE

150



BOARDROOM

-



CABARET

-



CLASSROOM

-



DINNER

200



DINNER DANCE

-



U SHAPE

-

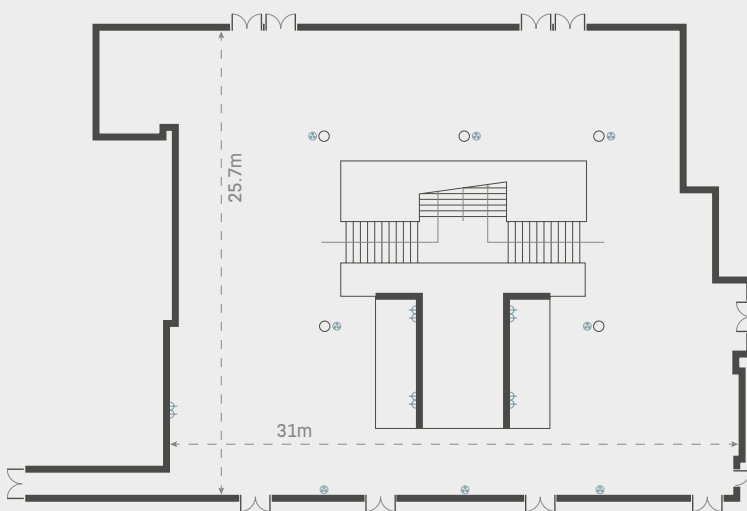


RECEPTION

500



FLOOR PLAN



13A SOCKET

USEABLE SPACE DIMENSIONS

1 X 32AMP SINGLE PHASE

CEILING HEIGHT 3.2M

CONTACT US ON: 01638 675300 | NEWMARKET.CONFERENCES@THEJOCKEYCLUB.CO.UK