



JOCKEY CLUB LONDON

FILMING LOCATIONS

RACE ON

◆◆◆◆
EPSOM DOWNS
A Jockey Club Racecourse

◆◆◆◆
KEMPTON PARK
A Jockey Club Racecourse

◆◆◆◆
SANDOWN PARK
A Jockey Club Racecourse

JOCKEY CLUB LOCATIONS

◆◆◆◆
EPSOM DOWNS

A Jockey Club Racecourse

◆◆◆◆
KEMPTON PARK

A Jockey Club Racecourse

◆◆◆◆
SANDOWN PARK

A Jockey Club Racecourse

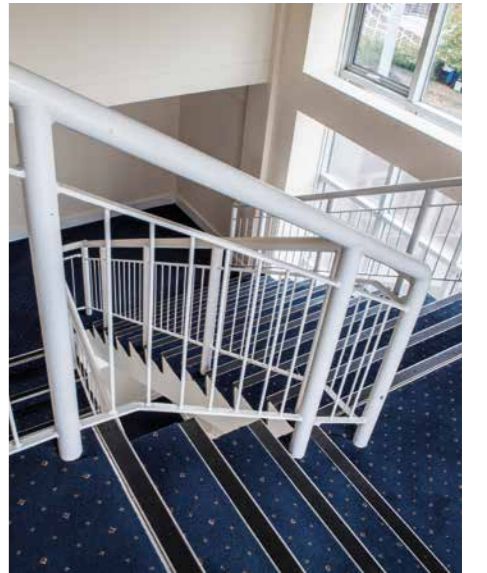
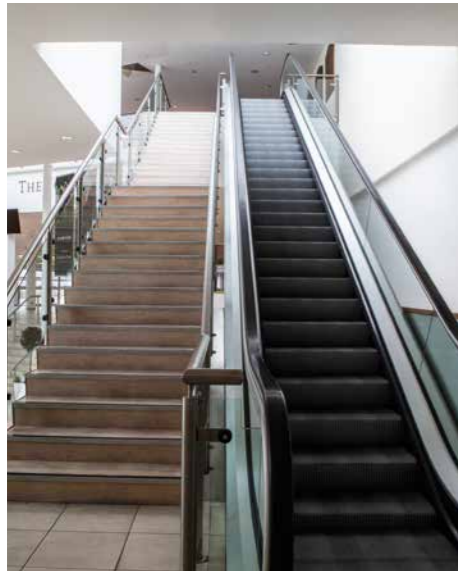
Jockey Club London locations consist of Epsom Downs, Kempton Park and Sandown Park racecourses, all based within 40 minutes of central London. From James Bond to Pride & Prejudice, Love Actually to Eddie the Eagle, our locations have been used as the perfect backdrop for a huge variety of film productions.

Features include:

- Convenient locations
- Easy access
- Unit base parking
- Entrance foyers
- Staircases
- Escalators
- Lifts
- Kitchens
- Bars
- Large halls
- Revolving door
- Corridors
- Large toilets
- Outdoor space









**FOR MORE
INFORMATION
PLEASE CONTACT**

Jockey Club Venues London Region

Call **01372 461 254**

Email **tracy.rusbridge@thejockeyclub.co.uk**

WWW.THEJOCKEYCLUB.CO.UK



EPSOM DOWNS

A Jockey Club Racecourse



KEMPTON PARK

A Jockey Club Racecourse



SANDOWN PARK

A Jockey Club Racecourse